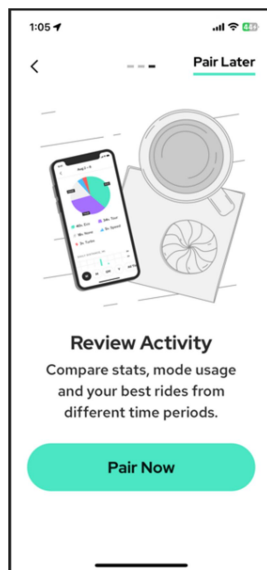


How to pair a bike and record a ride record?

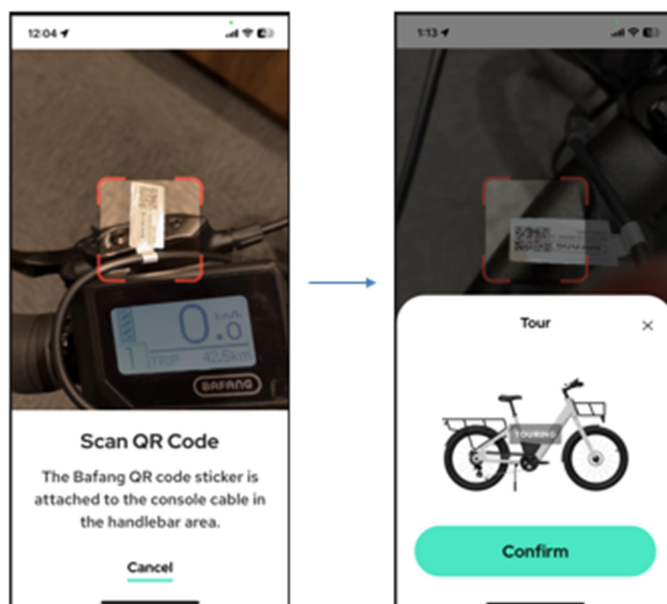
Before you use Cikada App to record your ride records or controlling/checking the information of the bike, you should pair and connect the bike.

Below shows how to pair a Cikada E-Bike.

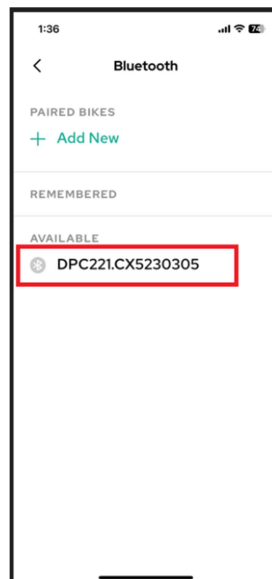
1. Power on the bike console and input the passcode of the console to login to the console.
2. When first time to login to the Cikada App, you will be reminded to pair a Cikada E-Bike.



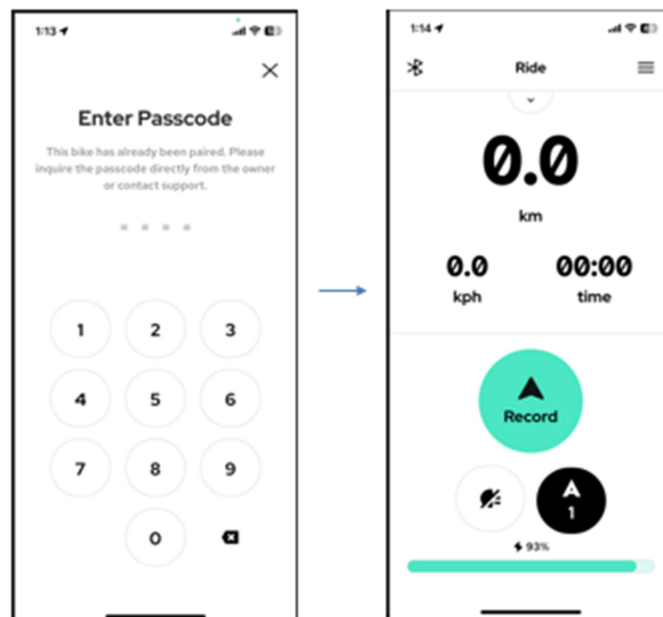
3. Scan the QR code attached to the console cable with Cikada App to pair the bike.



4. If the QR code sticker was lost, you can still select the console Bluetooth name (DPC221...) on the Cikada App Bluetooth page to pair the bike.



5. Confirm the pairing and set/enter the passcode set by the bike owner (1st pairing) to complete bike pairing.



6. Now you can start to use Cikada App to record your riding..